


The Art of MFE

A Monthly Edit by Dr. Miotto & the ME Plastic Surgery Team
Volume No. 7 | April | 2026



W E L C O M E

As we move further into spring, April is a beautiful time to focus on subtle, thoughtful enhancements that brighten your appearance and support long-term skin health. This month, we're highlighting lower eyelid rejuvenation, a non-surgical option for tightening and improving skin quality, and additional ways to maintain healthy, radiant skin at home.



Surgical Spotlight

LOWER BLEPHAROPLASTY

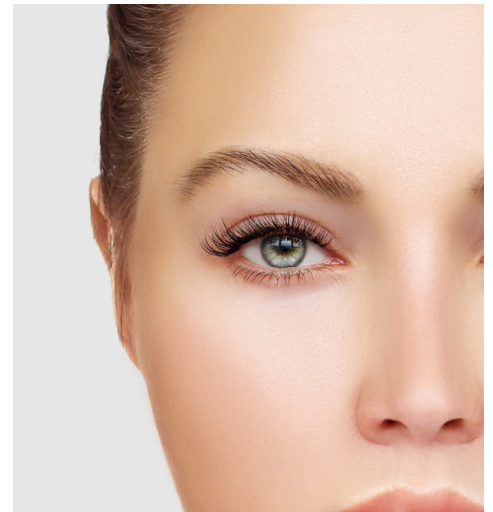
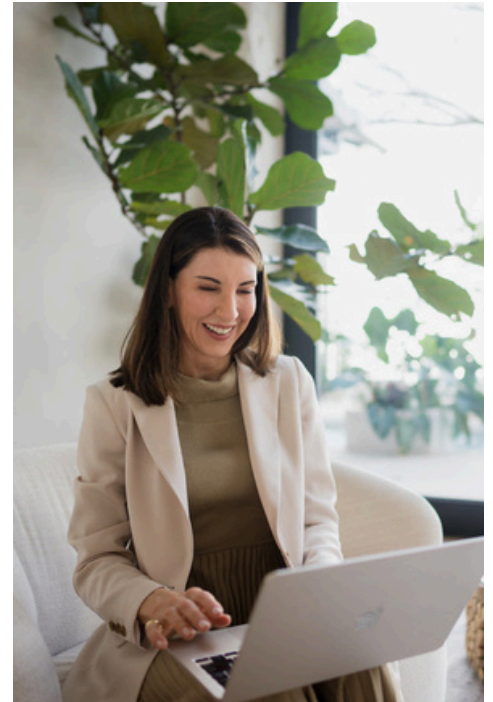
The Art of Restored Radiance

The eyes are the focal point of every conversation, often conveying emotion before a word is spoken. As we age, the delicate skin beneath the eyes can develop puffiness, bags, or a hollowed appearance that may not reflect how vibrant you feel. A lower blepharoplasty, or lower eyelid surgery, is a sophisticated procedure designed to address these signs of aging by removing or repositioning excess fat and creating a smoother transition between the lower eyelid and cheek.

Timeless Techniques for Natural Results

- **Hidden Artistry:** During a lower blepharoplasty, incisions are strategically placed to be camouflaged by the natural anatomy of the eyelid. For some patients, Dr. Miotto utilizes an internal incision inside the lower eyelid, which leaves no visible external scar while allowing for the precise removal of excess fat. When excess skin is a concern, a delicate incision along the eyelash margin allows for the removal of extra skin and fat to restore a firm, youthful appearance.

- **Synergistic Rejuvenation:** Lower eyelid surgery is usually paired with fat grafting, an upper blepharoplasty, or a brow lift to create a harmonious periorbital refresh.



Skin Health Spotlight



SOFWAVE

Sofwave is a non-invasive ultrasound treatment designed to improve skin laxity and refine overall skin quality by stimulating collagen production within the dermis. By delivering controlled, superficial heat to targeted layers beneath the skin, Sofwave encourages natural collagen and elastin production, helping to smooth fine lines and create firmer, more resilient skin over time.

The Science of Firmness:

- **Collagen Production:** The treatment delivers targeted thermal energy to trigger the production of new collagen and elastin fibers, which are essential for youthful skin structure.
- **Gentle & Precise:** This FDA-cleared technology preserves the skin's surface while delivering energy to the dermis, making it safe for all skin types.

May Preview Special: Throughout the month of May, we are offering **50% off all Sofwave** treatments. Spots are strictly limited. Please call or text our office to secure your appointment or learn more about how this treatment can enhance your rejuvenation plan.



Wellness Moment

THE BEAUTY OF INTENTION

Luxury is found in the moments we set aside for stillness and creativity. This April, we encourage you to reconnect with your creativity through tactile beauty. Spend a morning or afternoon curating a custom floral arrangement for your home. The act of selecting seasonal blooms and focusing on composition is a meditative practice that brings the beautiful renewal of spring indoors.

This Month's Featured Products

REVISION SKINCARE DEJ DUO

Elevate your regimen with the **D•E•J Face Cream** and **D•E•J Night Face Cream**. This power duo targets the Dermal-Epidermal Junction to visibly reduce fine lines and firm the skin. While the Face Cream focuses on hydration and microbiome support for the day, the Night Face Cream utilizes time-released Retinol and Bakuchiol to rejuvenate and refine skin texture while you sleep.

